



Years of Excellence



KAPOOR GLASS



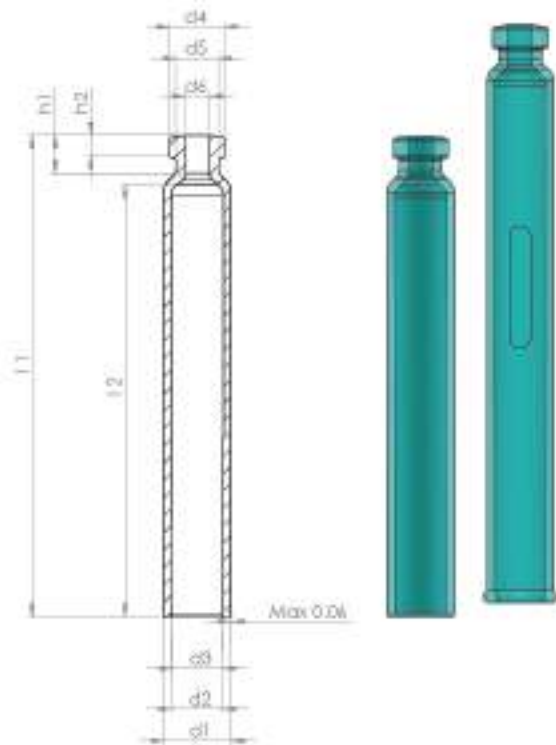
Kapoor Glass has been at the forefront of Primary Glass Packaging in India for over six decades and across three generations. The company operates a modern ISO 9001:2015 certified facility producing high-quality Ampoules, Vials & Cartridges using state-of-art technology.

The Ampoules & Vials are fully compliant with European, US, and Japanese Pharmacopeias.

The majority of the production is exported worldwide to over 32 countries, including USA, countries within the EU, and other highly regulated markets.

The company directly imports high-quality Neutral Borosilicate Glass Tubing - USP Type 1 from leading producers in Europe, Japan & USA.

ABOUT US



CARTRIDGES

Glass Cartridges are offered in accordance with ISO 11040-1 & ISO 13926-1 with 100% in-process Camera Inspection for Dimensional and Cosmetic Quality.

Features

- Capacity up to 20ml
- Screen Printing
- Identification Rings/Graduation
- Dual Chamber/Bypass
- External Silicon Coating
- Automatic Robotic Packing in Controlled Environment

Tubing ID	Tubing ID	Tubing ID					
D1	D2	D3	D4	D5	D6	H1	H2
mm	mm	mm	mm	mm	mm	mm	mm
8.65	6.85	6.55					
10.75	8.65	8.30					
10.85	8.65	8.35	7.15	5.50	3.15		
10.95	9.25	8.95					
11.60	9.70	9.35				5.00	2.90
14.00	12.00	11.65		7.20			
14.45	11.85	11.50	9.50		4.50		
17.05	14.25	13.90		7.75			
18.25	16.05	15.50					
22.05	19.05	18.55	13.00	11.00	7.00	8.00	3.60

AMPOULES

Kapoor Glass manufactures high quality ampoules on latest European lines. All ampoules are produced with 100 % Camera inspection to eliminate defects & produce tolerances tighter than ISO/DIN standards. Robotic loading and automatic feeding of Glass tubes minimizes human intervention & improves yield & efficiency. Ampoules comply with ISO 9187:1 & 9187:2. Sampling plan as per ISO 2859:1 & AQL Limits based on EC standards.

TYPES OF AMPOULES

- Form B – Stem Cut
- Form C – Flame Cut
- Form D – Rota/Closed
- Form BC – Flame Cut Straight Stem
- Form E – Marzocchi

BREAKING SYSTEMS

- Colour Break Ring
- Optimized One Point Cut (Dot & Cut with 100% Camera Inspection)
- Score Break (360° Score Mark)

FEATURES

- Up to 3 separate colour rings – Ink is free of heavy metals
- High quality customised screen printing.
- External silicon coating to reduce surface scratches during handling.
- Internal Ammonium sulphate treatment for de-alkalization of the container surface for improved stability.
- Gamma sterilisation.

INNOVATE @KapoorGlass

Internally funded R&D function continuously works on developing breakthrough ideas & features to improve ampoule & vial manufacturing processes.

- **Dimension+** is the new benchmark for dimensional accuracy of key parameters of ampoules is achieved using a high-performance vision system with internally developed software utilizing advanced learning control algorithms.
- Unique **Innova Surface+** process reduces friction and lowers breakage whilst washing & filling.
- **Type 1 Optima** ensures significant reduction in Alkali release for sensitive medicines & extends shelf life.



DIMENSION+ **INNOVA SURFACE+**

TUBULAR VIALS

Kapoor Glass manufactures high quality Vials on latest Servo Controlled German & Italian Lines for exceptional accuracy. Vials are produced with Japanese 'Hot End' & 'Cold End' Camera Vision systems for 100% dimensional inspection of all key parameters. Robotic loading directly from the tube bundle & automatic feeding of Glass tubes minimizes human intervention and improves yield & efficiency whilst reducing scratches. Robotic packing in controlled environment with state-of-art cosmetic camera systems ensure the highest quality standards. Kapoor Glass follows the tightest EC AQL Limits and US Military Sampling plan to ensure consistently high-quality supplies.

TYPE OF VIALS (1 ML TO 100ML)

- Penicillin Neck
- Screw Neck
- Lyophilized
- High Performance Liquid Chromatography (HPLC)
- Blow Back (European & American)

Vials can be manufactured as per DIN/ISO Specifications as well as customized to specific requirements.

LyoSafe sets the new standard for Vials that undergo a Lyophilization Cycle. Thickness at over 1000 points for each and every vial are measured and profiled to ensure uniformity and repeatability.



FEATURES

- High quality customised screen printing
- External silicon coating to reduce surface scratches during handling
- Internal Ammonium Sulphate treatment for de-alkalisation of the container surface for improved stability

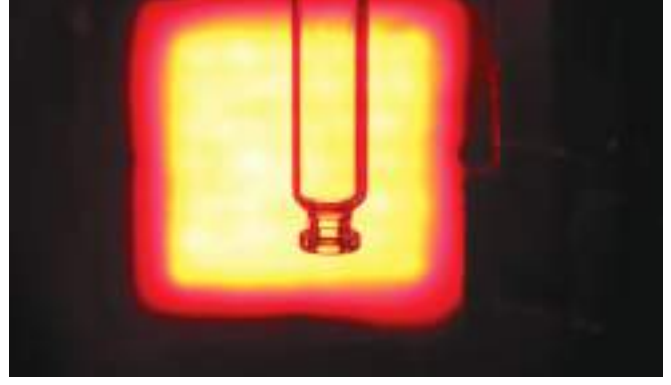
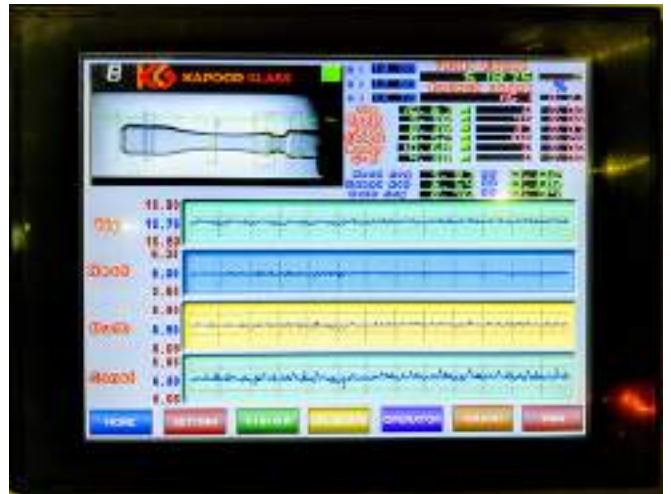
COSMETICS - PERFUME SAMPLER

Kapoor Glass, partners with leading cosmetic companies to produce high quality, attractive & chic Perfume Samplers as well as Vials with innovative spray solutions in both 'Screw On' and 'Snap Fit' variants. These come in a variety of sizes from 0.5ml to 50ml and can be decorated with high quality ceramic printing.

The company collaborates with European & American spray pump and applicator stick manufacturers to offer a speciality product that improves brand value & customer perception.



LYOsafe



OUR GLOBAL REACH



★ Manufacturing Facility

CORPORATE OFFICE

Kapoor House, A - 37 Street No.2, MIDC, Andheri (East), Mumbai 400093, India

TEL: +91 (22) 2743 1992 / 2743 1962 / 27431398

EMAIL: info@kapoorglass.com

Manufacturing Unit 1 - Glass Ampoules Division

Plot No.200 /201 /212, Jawahar Co-Operative Industrial Estate,
Kamothe, Panvel, Navi Mumbai - 410209, India

Manufacturing Unit 2 - Tubular Vials and Cartridges for Pen Systems

Plot No. 253 / 254, Jawahar Co-Operative Industrial Estate,
Kamothe, Panvel, Navi Mumbai - 410 209, India

Unit 3 - Warehouse

Plot No. 181, Jawahar Co-Operative Industrial Estate,
Kamothe, Panvel, Navi Mumbai - 410209, India



USFDA DMF No. 31174